



## Lithium Battery Pack

### ▶ VT48100E-A2

Intelligent lithium battery, integrated with self-designed BMS which can be widely used in various telecom and energy storage system such as indoor distribution stations, integrated base stations, edge stations, micro-cell stations, FTTX equipment, distributed power supply, standby.

### | Key Features

- High quality LFP cells from leading company
- High rate charge/discharge current @100A
- Long design life up to 15+ years@ 25°C
- High Efficiency between charge and discharge
- Modbus/SNMP V2/SNMP V3 (optional)
- Multiple protection methods based on patented BMS
- Intelligent anti-theft solution

### | Specifications

Item	16S
Nominal Capacity	100Ah@0.2C,25°C
Nominal Voltage	51.2V DC
Rated Charge Voltage	56.4 V
Max. Continuous Charge Current	100A@25°C
Discharge cut-off Voltage	43.2 V
Max. Continuous Discharge Current	100A@25°C
Temperature Range of Charge	0°C~60°C
Temperature Range of Discharge	-20°C~60°C
Allowed Humidity Range	≤95% RH
Weight	Approx. 41 kg
Ip protection Level	IP 20

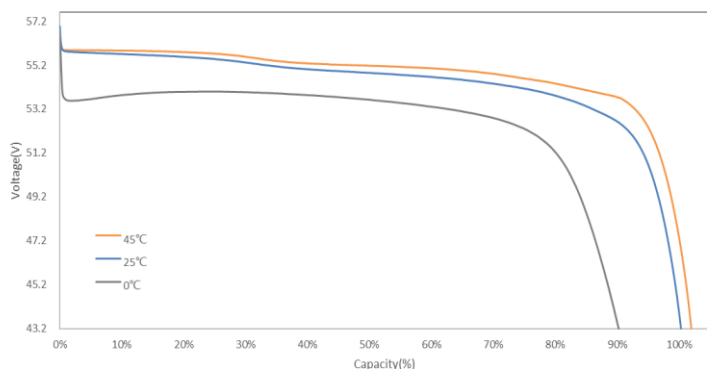
## Discharge data with constant current/25°C

Time/h \ Current/A	0.1C	0.2C	0.3C	0.4C	0.5C	0.6C	0.8C	1C
End voltage /V	Hours							
49.6 V	9.43	4.60	3.05	2.30	1.67	1.37	0.88	0.68
48.0 V	9.77	4.78	3.20	2.33	1.82	1.53	1.10	0.87
46.4 V	10.00	4.88	3.28	2.43	1.93	1.57	1.18	0.94
44.8 V	10.18	5.00	3.35	2.46	1.98	1.65	1.22	0.97
43.2 V	10.30	5.15	3.40	2.54	2.00	1.67	1.24	1.00

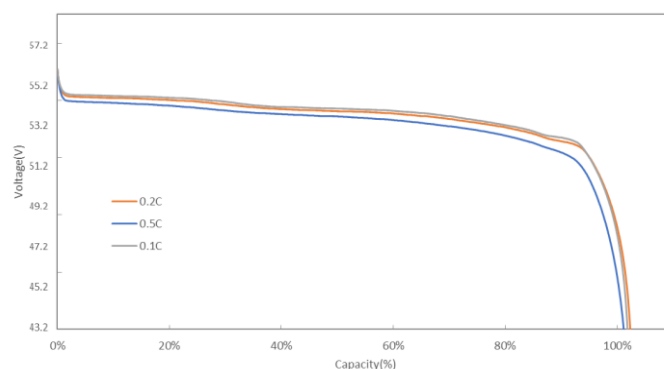
## Discharge data with constant power/25°C

Time/h \ Power/W	512	1024	1540	2040	2560	3100	4080	4600
End voltage /V	Hours							
49.6 V	9.42	4.59	3.04	2.29	1.66	1.36	0.87	0.81
48.0 V	9.75	4.76	3.18	2.31	1.80	1.51	1.08	0.88
46.4 V	9.97	4.85	3.25	2.40	1.90	1.54	1.15	0.90
45.0 V	10.14	4.96	3.31	2.42	1.94	1.61	1.18	0.95
43.2 V	10.26	5.11	3.36	2.50	1.96	1.63	1.20	0.96

## Discharge Curves



Voltage vs. Discharge Capacity Percentage under different temperature



Voltage vs. Discharge Capacity Percentage with different constant current rate